

# CHOOSE YOUR HARMFUL BLUE LIGHT\* PROTECTION

## UPGRADE FROM ESSILOR

### 1 THE ULTIMATE LENS PACKAGE

#### PROGRESSIVE LENS



#### EXTENDED VISION

Extends vision at arm's length for reduced head movement

#### SINGLE VISION LENS



#### COMFORTABLE VISION

Helps defend against eye strain\*

\*Accommodative relief found in designs 1, 2, and 3.

#### WITH ENHANCEMENTS



#### NO-GLARE

Reduces glare and reflections from all directions



#### LIGHT INTELLIGENT

**Filters over 85% of Harmful Blue Light when fully activated**

Fully clear indoors, darkens outdoors

### 2 OR ADD PROTECTION TO YOUR ESSILOR LENS

## ESSENTIAL BLUE SERIES™

Up to 3x more protection against Harmful Blue Light than a standard clear lens\*\*

\*\*Standard clear lenses filter approximately 5% of Harmful Blue Light.

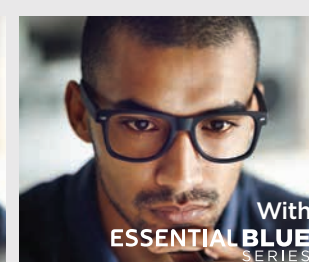
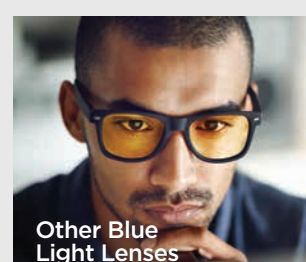
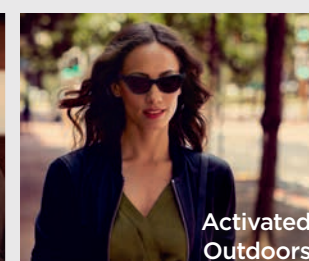
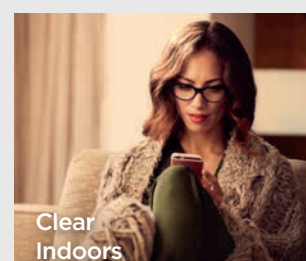
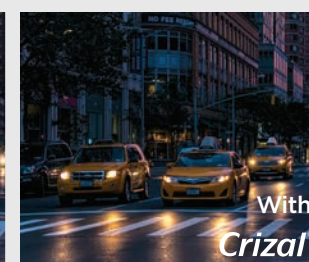
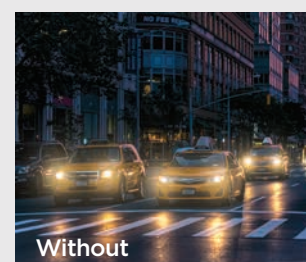
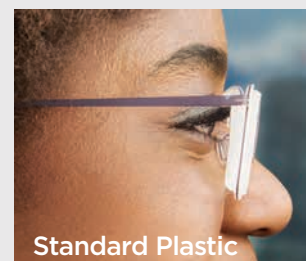
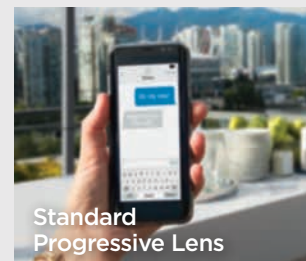
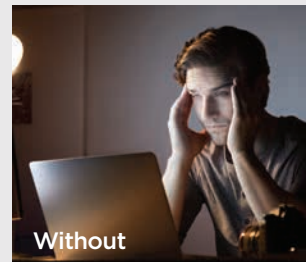
\*Arnault E, Barrau C, Nanteau C, Gondouin P, Bigot K, et al. (2013). Phototoxic Action Spectrum on a Retinal Pigment Epithelium Model of Age-Related Macular Degeneration Exposed to Sunlight Normalized Conditions. PLoS ONE 8(8): e71398. doi:10.1371/journal.pone.0071398 (August 23, 2013). Identified Harmful Blue Light through in vitro experiment on swine retinal cells, where the most toxic wavelengths are high energy visible light falling between 415-455nm on the light spectrum (blue-violet light).

©2018 Essilor of America, Inc. All rights reserved. Unless indicated otherwise, all registered trademarks and trademarks are the property of Essilor International and/or its subsidiaries in the United States and in other countries. Transitions and the swirl are registered trademarks of Transitions Optical, Inc., used under license by Transitions Optical Limited. Photochromic performance is influenced by temperature, UV exposure, and lens material. These products may be protected by one or more patents listed at www.essilorusa.com/patents. 15872\_SVM\_EEE SHK/SSX 4/18

### BRAND BENEFITS

Simulated Images

PROGRESSIVE LENS OR SINGLE VISION LENS MATERIAL



### Eyezen+ | ENHANCED SINGLE VISION LENS

FOR COMFORTABLE VISION

- Helps defend against eye strain
- Reduces exposure to Harmful Blue Light\*  
Eyezen™+ lenses block at least 20% of Harmful Blue Light.

### Varilux® | PROGRESSIVE LENS

FOR SHARPER, MORE NATURAL VISION

- Sharp vision, even in dim lighting
- Easily shift focus from near to far and in between

### Thin&Lite® | THE THINNER LENS

FOR GREATER COMFORT & A BETTER APPEARANCE

- Creates thinner, lighter lenses
- Ideal for moderate to complex prescriptions

### Crizal® | NO-GLARE



FOR THE CLEAREST VISION POSSIBLE

- Protects against glare, scratches, smudges, and UV light
- Optimal for nighttime driving and digital device use

### Transitions® | LIGHT INTELLIGENT LENS

AUTOMATICALLY ADJUSTS TO CHANGING LIGHT

- Constantly adapts so you always see your best
- Reduces exposure to UV and Harmful Blue Light  
Transitions® lenses filter over 85% of Harmful Blue Light when fully activated.

### ESSENTIAL BLUE SERIES | HARMFUL BLUE LIGHT PROTECTION

FOR PROTECTION WITH SUPERIOR CLARITY

- Available for progressive and single vision lenses
- Helps filter Harmful Blue Light
- Lets in Beneficial Blue Light†

†Beneficial Blue Light is the blue-turquoise wavelengths from 465-495nm on the light spectrum.